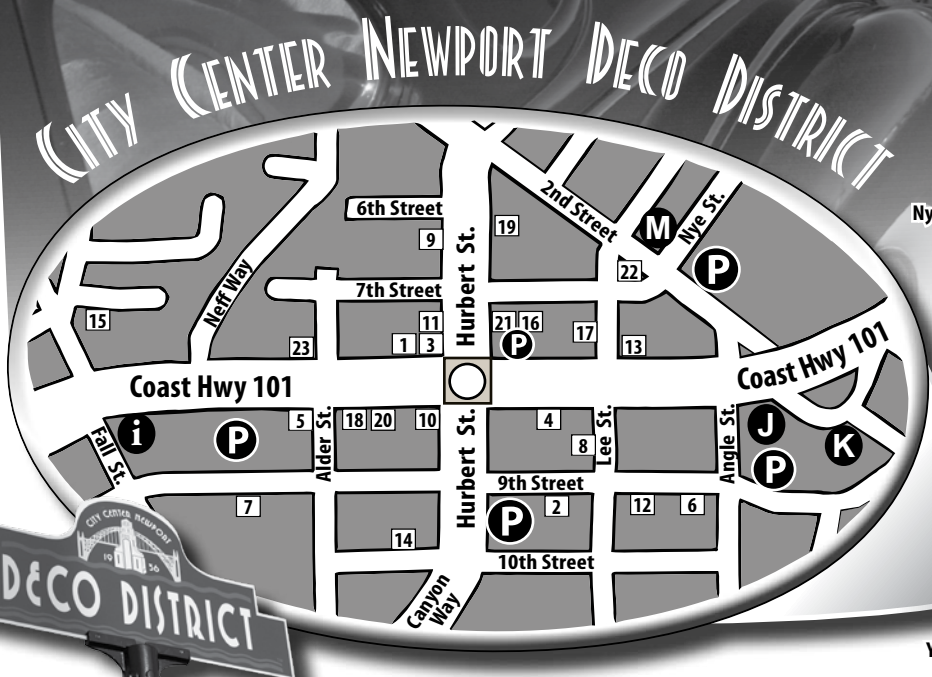


NEWPORT OREGON

POINTS OF INTEREST



- ### Points of Interest
- A Yaquina Head Lighthouse
 - B Visual Arts Center
 - C Performing Arts Center
 - D Yaquina Bay Lighthouse
 - E Hatfield Marine Science Ctr
 - F Rogue Brewery
 - G Oregon Coast Aquarium
 - H Hospital
 - i Tourist Information
 - J City Hall/Police Station
 - K Recreation Center
 - L Library
 - M Post Office
 - N Coast Guard Station
 - O Yaquina Bay Bridge
 - P Public Parking



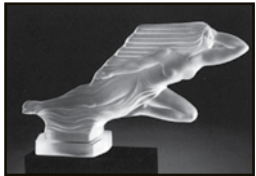
- | | | |
|--|--|---|
| <p>1 Bier One
424 SW Coast Hwy 265.4630</p> <p>2 La Maison
315 SW 9th Street 265.8812</p> <p>3 Mazatlan Restaurant
404 SW Coast Hwy 265.8595</p> <p>4 Photos-4-You
337 SW Coast Hwy 265.2480</p> <p>5 Pig 'N Pancake
810 SW Alder Street 265.9065</p> <p>6 9th Street Gallery
217 SW 9th Street 265.8930</p> <p>7 Oregon Coast History Ctr.
545 SW 9th St 265.7509</p> <p>8 Coast Hearth & Home
828 SW Lee Street 265.8390</p> | <p>9 Jonah's Whale
614 SW Hurbert St. 265.8569</p> <p>10 The Kite Company
407 SW Coast Hwy 265.2004</p> <p>11 Rags to Riches
724 SW Hurbert St. 265.5541</p> <p>12 Sandcastle Toys
255 SW 9th Street 574.1901</p> <p>13 Bank of the West
248 SW Coast Hwy 265.9444</p> <p>14 Desert Springs Spa
422 SW 10th Street 574.9887</p> <p>15 Dolphin Real Estate
547 SW 7th St. 800.365.6638</p> | <p>16 Hairs The Thing
715 SW Hurbert St. #C 265.2546</p> <p>17 Holistic Counseling Ctr.
306 SW Coast Hwy.#A 265.5500</p> <p>18 Lincoln Co. School Dist.
459 SW Coast Hwy 265.4403</p> <p>19 McCarthy Hamilton LLC
605 SW Hurbert St. 574.4399</p> <p>20 Rae Crook Insurance
443 SW Coast Hwy 265.2211</p> <p>21 Scanners Digital Solutions
715 SW Hurbert St. #A 574.3333</p> <p>22 State Farm Insurance
313 SW 2nd Street 265.2011</p> <p>23 West Coast Bank
506 SW Coast Hwy 574.1131</p> |
|--|--|---|





ABOUT ART DECO

Art Deco is the popular name for a style of artistic expression that flourished from the 1920s to the early 1940s. During its time it was called the modern style, the new style or streamline style... it was the contemporary style of the period.



Art Deco is a unifying concept encompassing art, architecture, graphics and industrial design. When combined

with new materials - aluminum, bakelite, fiberglass and neon - it creates a unique 20th Century streamlined look.



Art Deco expresses a belief in progress, futurism and the beneficial relationship between man and machine. Design characteristics suggest speed, power and stylized beauty.

Art deco was not just a style of design, but a movement that penetrated contemporary life so deeply that it molded fashion, work, leisure, transportation and modern popular culture. Art Deco is a marvelously modern, lyrically lovely, and a not-so-remote period of modern American history well worth preserving.



Models: Lynsey Johnson and Aaron Garofalo • 1936 Ford courtesy Thomas Chandler • Hair by CeCe of Nicki's of Nye Beach Salon • Dress by Elena Couture • Photography and Graphic Design by Scanners Digital Solutions

ABOUT THE DECO DISTRICT

When the Yaquina Bay Bridge opened in 1936, Newport joined the modern age of highway transportation. This shift to an auto-oriented culture invigorated and reoriented Newport's central business district. As this area developed along the new Highway 101, the bridge's modern, art deco styling influenced many of the new buildings constructed from the



Yaquina Bay Bridge five months before opening to traffic.

Photo: Lincoln County Historical Society



Photo: Lincoln County Historical Society

late 1930s to the 1950s. To honor this unique history and provide a focus for revitalization, the Newport City Council unanimously approved official designation of the district as an **Art Deco Heritage Area** in June 2007. Of the many buildings within the district, notable art deco structures include the original Midway Theater and Bank of Newport, built side-by-side at the same time in 1936 at the corner of Alder Street and Coast Highway.

While there is still much to do, today this corner serves as the center of the Deco District's revival. CCNA's color/design consulting team is working with property owners to realize the vision of a unique and vibrant historic district in the art deco style.



Midway Theater/Bank of Newport in 1938

Photo: Lincoln County Historical Society



The center of the Deco District revival is the former Midway Theater, Bank of Newport and City Hall.

ABOUT THE CITY CENTER NEWPORT ASSOCIATION

The Deco District is represented by the **City Center Newport Association, Inc.**, a 501(c)(3) non profit corporation registered with the Oregon Cultural Trust.

The volunteer members of CCNA are committed to preserving Newport's unique art deco heritage, promoting the art deco era



CCNA special events promote the art deco culture.

popular culture and serving as a voice for the business district on city policies and common concerns.

For more information about the Deco District or to find out how you can help to preserve this unique art deco heritage, visit

citycenternewport.com